

Showermate Standard Single Pumps

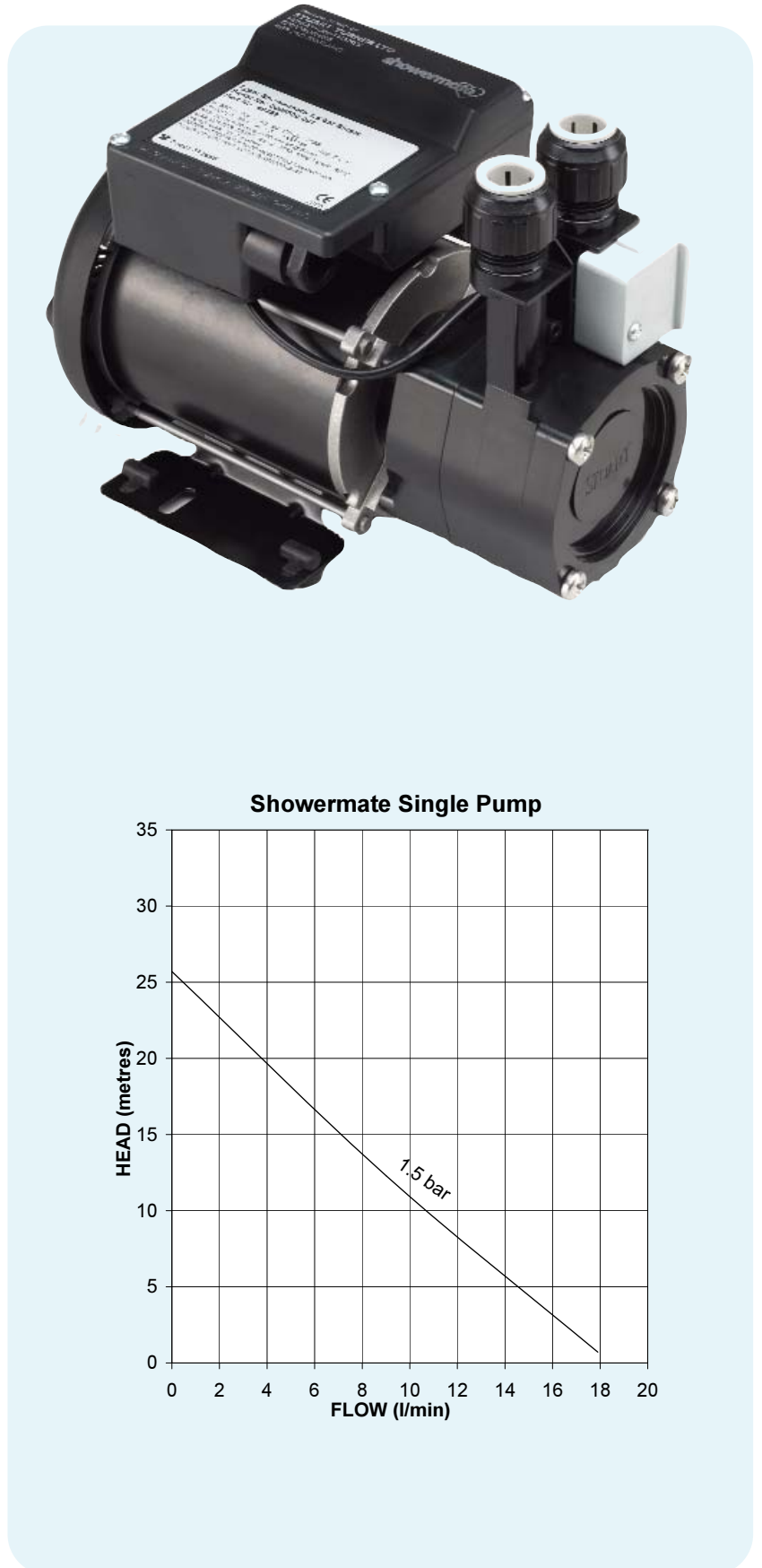
There's nothing more irritating than a tap or a shower that's no more than a trickle. Thankfully, the new Showermate from Stuart Turner means it's a problem you need never worry about again. Not only will Showermate give your water pressure a much needed boost.

They can be used for:

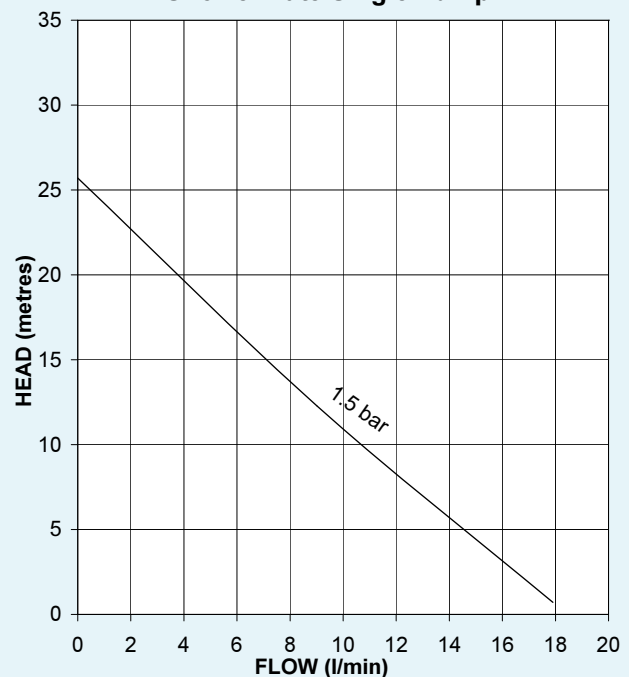
- A single tap.
- Blended water from a shower mixer.
- Fixed plate or single function shower.

Designed to suit any tank fed, open vented system, the new Showermate offers the ultimate solution to poor performance. The new Pumps:

- Are fully automatic.
- Are supplied complete with 15 mm flexible hoses.
- Offer more power and efficiency than ever before.
- Supplied pre-wired with 1.5 metre cable and anti-vibration feet.
- Reassurance of up to a 2-year guarantee (subject to conditions)



Showermate Single Pump



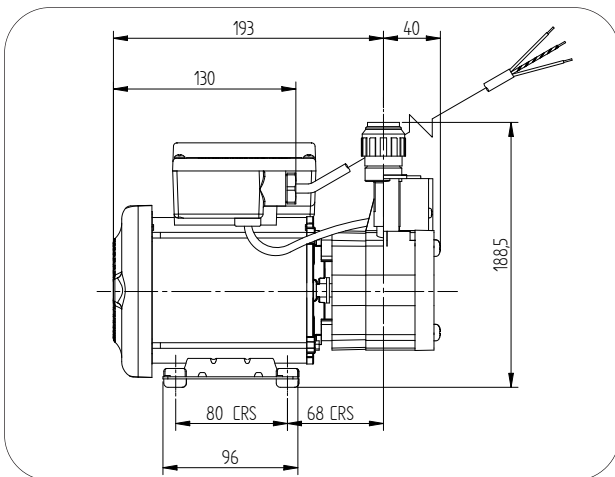
2

year guarantee!

subject to
conditions

Showermate Standard Single Pumps

System Booster Pumps	1.5-2.6 bar max Single 46429
Performance (bar) @ 9 l/min	1.3
Maximum Flow Litres Per Minute	17
Maximum Head Valve Closed (bar)	2.5
Maximum Inlet Static Head (Metres)	13
Hoses Flexible 15 mm Push-In	✓
Pump Connection 15 mm Push-In	✓
Carbon Ceramic Mechanical Seal	✓
Flow Switch Sensitivity approx. 0.8 l/min	✓
Negative Airswitch Option Available	✓
WRAS Approved 65°C max	✓
Power Supply 230/1/50	✓
Enclosure Rating BS EN 60529	IPX4
Motor Type, Induction, Permanent Capacitor, Auto Resetting Protective Thermotrip	✓
Nominal Power Consumption (Watts) @ 9 l/min	200
Full Load Amps	1.3
Fuse Rating Amps	5
Pre-Wired	✓
Duty Rating Intermittent (S3) 30 mins on/ 30 mins off @ 9 l/min	✓
Length mm	236
Width mm	130
Height mm without flexibles	188
Gross Weight Packed (kg)	4.4



showermate

Stuart Turner Ltd
Henley-on-Thames
Oxfordshire RG9 2AD
England
Telephone: +44 (0)1491 572655
Fax: +44 (0)1491 573704

Email:
pumps@stuart-turner.co.uk
Web:
www.stuart-turner.co.uk

V.A.T. REG. No. 199 0987 92.
Registered in England No. 88368.
Registered Office:
Market Place, Henley-on-Thames