

Thame centrifugal pumps

The Thame pump range comprises of two models the T6-2 and T12-2, representing the continuation of product development and offering the very latest in pump design.

Application

This range is ideal for liquid transfer applications where a long pipe run may be involved.

Materials

Body	Noryl/stainless steel
Impeller	Polycarbonate
Pump shaft	Stainless steel
Seal	Nitrile/carbon/silicon

Operating Conditions

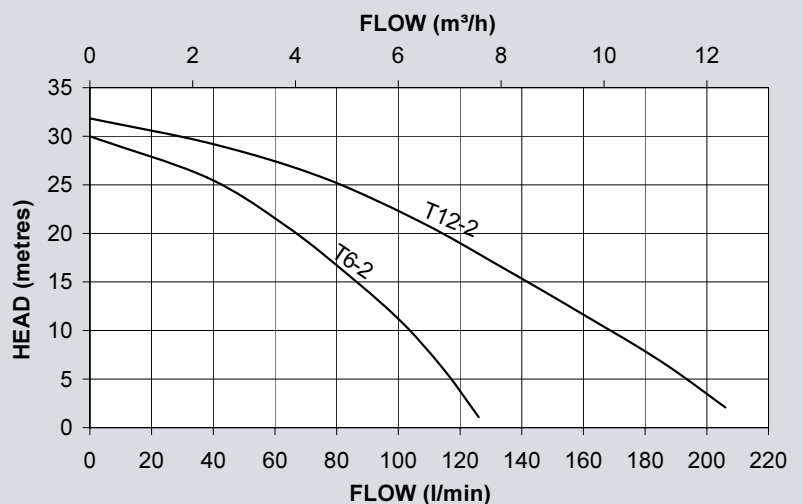
Max. liquid temp.	65°C
Min. liquid temp.	4°C
Max. suction lift	4.6 m
Max. ambient temp.	40°C
Max. viscosity	50 Secs redwood no. 1 scale 9.5 centistokes

Pump Connection Sizes

	Inlet	Outlet
Both models	G1F	G1F



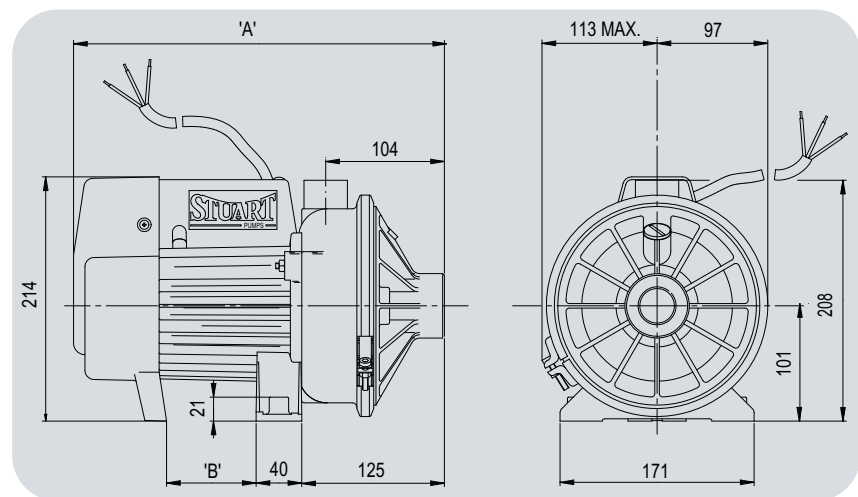
THAME 12-2



Thame centrifugal pumps

Model	Motor*	Nominal watts	Watts full flow	Amps full load	Impeller	Seal	Carton dims. mm			Gross weight (packed) Kg	Part no.
							L	x W	x H		
T6-2	230/1/50	650	890	3.9	Plastic	Nit/Car/Sil	440	x 200	x 240	8.2	46259
T12-2	230/1/50	820	1140	5.2	Plastic	Nit/Car/Sil	440	x 200	x 240	9.4	46260

*Built to IP55, all motors are designed for continuous running and feature totally enclosed fan ventilated cooling with integral thermal overload protection.



Pump description	Dim. 'A'	Dim. 'B'
T6-2	326	77.5
T12-2	350	101.5

All dimensions shown are in mm.

Stuart Turner Ltd
Henley-on-Thames
Oxfordshire RG9 2AD
England
Telephone: +44 (0)1491 572655
Fax: +44 (0)1491 573704

Email:
pumps@stuart-turner.co.uk
Web:
www.stuart-turner.co.uk

V.A.T. REG. No. 199 0987 92.
Registered in England No. 88368.
Registered Office:
Market Place, Henley-on-Thames

**STUART
TURNER LTD**