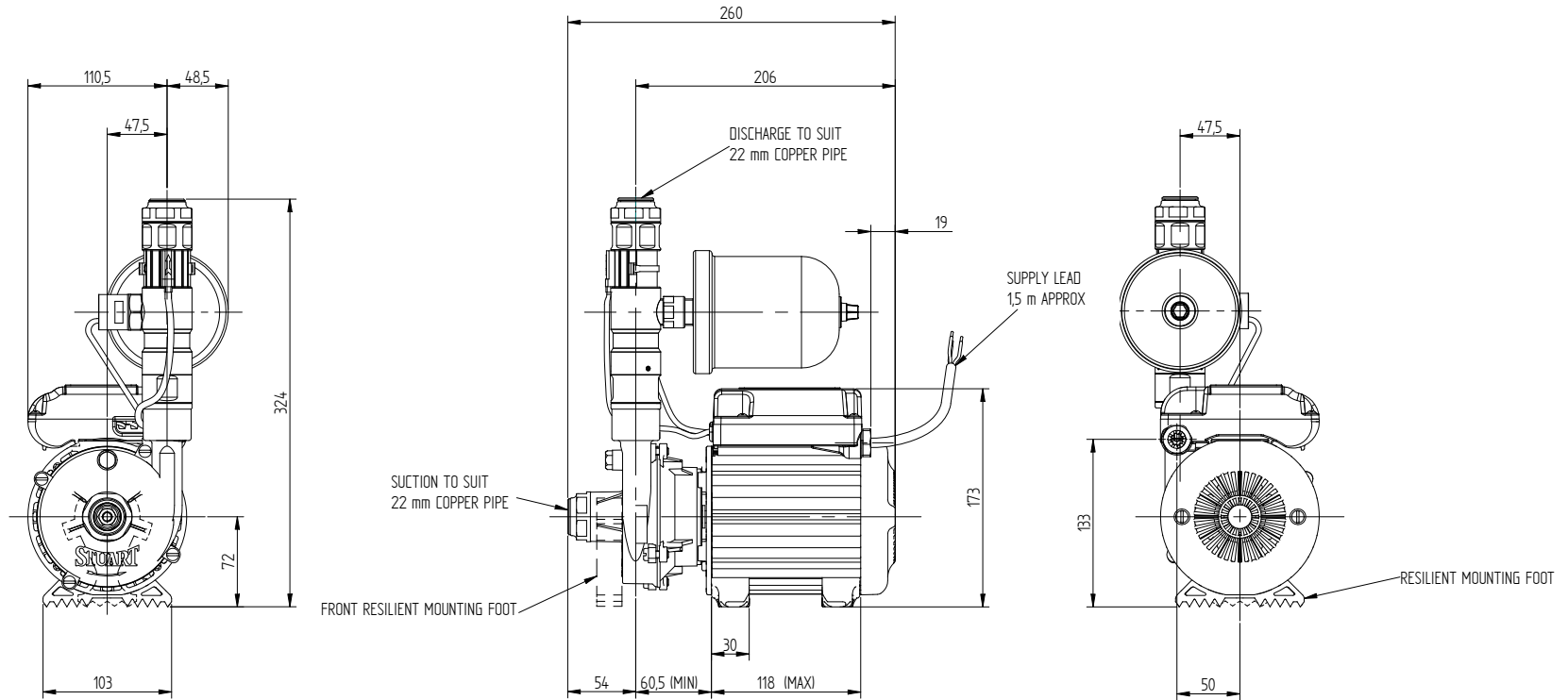


# STUART TURNER LTD HENLEY-ON-THAMES.

THIRD ANGLE PROJECTION

DIMENSIONS IN MILLIMETRES



NOTE:  
THE PRESSURE VESSEL CAN BE RE-POSITIONED IF REQUIRED TO SUIT SPECIFIC INSTALLATIONS, HOWEVER, CARE MUST BE TAKEN WHEN RE-POSITIONING TO ENSURE NO STRAIN IS PLACED UPON THE PRESSURE SWITCH OR FLOW SWITCH CABLES.

If drawing is to be used for constructional purposes please contact Stuart Turner Ltd and request a certified document.

Stuart Turner Ltd reserves the right to amend specifications without notice.

Stuart Turner Ltd own the copyright within this document. The document may be printed for personal use only. The document must not be altered, reproduced or utilized in any way without written permission from Stuart Turner Ltd, Henley-on-Thames, Oxon, UK.

## GENERAL ARRANGEMENT OF A MONSOON EXTRA U1.4 BAR SINGLE

W41342

DATE: 02/03/2010