

# Showermate eco Pumps

There's nothing more irritating than a tap or a shower that's no more than a trickle. Thankfully, the Showermate eco from Stuart Turner means it's a problem you need never worry about again. Not only will Showermate eco give your water pressure a much needed boost.

Requiring a flow of just 0.8 l/min to start they can be used for:

## Twins

- Bath/basin mixer tap.
- Fixed plate or single function shower.
- Multi-function shower.
- 2 x single function showers.

Designed to suit any tank fed, open vented system, the Showermate eco pumps offer the ultimate solution to poor performance.

## Single

- Boost water to a single tap.
- Pump blended water.

Features include:

- Fully automatic.
- Supplied complete with 15 mm flexible hoses.
- Supplied pre-wired with 1.5 metre cable and anti-vibration feet.
- Reassurance of up to a 2-year guarantee (subject to conditions)
- Compact and robust design.

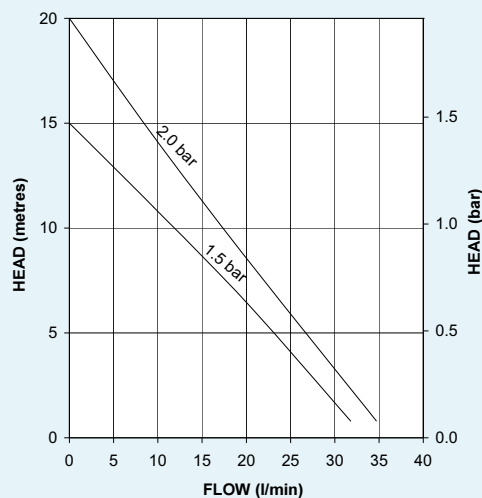
2

year guarantee!

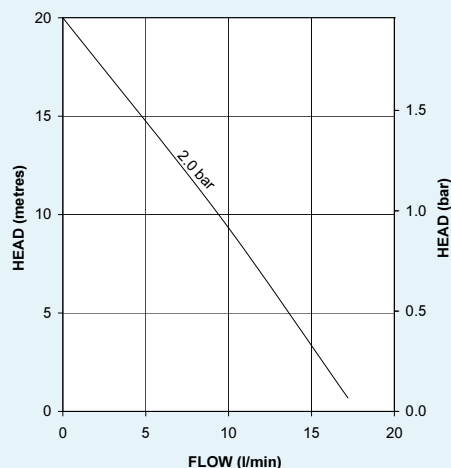
subject to  
conditions



Showermate Eco Twin Pump

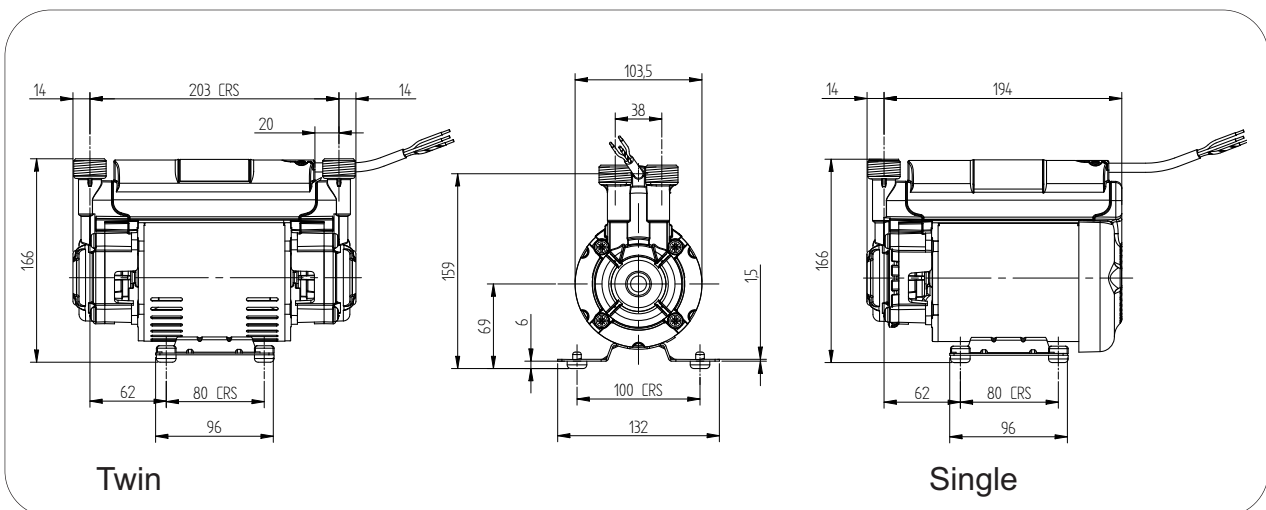


Showermate Eco Single Pump



# Showermate eco Pumps

System Booster Pumps	S1.5 bar Twin 46502	S2.0 bar Twin 46500	S2.0 bar Single 46503
Maximum Flow Litres Per Minute	32	35	17
Maximum Head Valve Closed (bar)	1.5	2.0	2.0
Maximum Inlet Static Head (Metres)	10	10	10
Hoses Flexible 15 mm Push-In	✓	✓	✓
Pump Connection G $\frac{3}{4}$ "	✓	✓	✓
Carbon Ceramic Mechanical Seal	✓	✓	✓
Flow Switch Sensitivity approx. 0.8 l/min	✓	✓	✓
WRAS Compliant 65°C max	✓	✓	✓
Power Supply 230/1/50	✓	✓	✓
Enclosure Rating to BS EN 60529	IP22	IP22	IP22
Motor Type, Induction, Permanent Capacitor, Auto Resetting Protective Thermotrip	✓	✓	✓
Power Consumption (Watts)	385	420	215
Full Load Amps	1.7	1.8	1.0
Fuse Rating Amps	5	5	5
Pre-Wired	✓	✓	✓
Duty Rating Intermittent (S3) 30 mins on/ 30 mins off @ 9 l/min	✓	✓	✓
Length mm	231	231	208
Width mm	132	132	132
Height mm without flexibles	166	166	166
Gross Weight Packed (kg)	4	4	3.2



Stuart Turner Ltd  
Henley-on-Thames  
Oxfordshire RG9 2AD  
England  
Telephone: +44 (0)1491 572655  
Fax: +44 (0)1491 573704

Email:  
pumps@stuart-turner.co.uk  
Web:  
www.stuart-turner.co.uk

V.A.T. REG. No. 199 0987 92.  
Registered in England No. 88368.  
Registered Office:  
Market Place, Henley-on-Thames