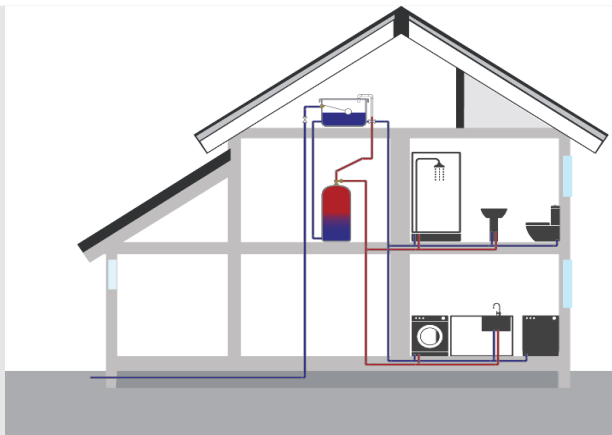


Gravity Fed System Also called a 'Vented System'



Typical Features:

- A cold tank (usually located in the roof space)
- A hot water cylinder (usually located in a cupboard on the top floor).

The **water pressure** available is largely **due to gravity** and is dependent upon the height of the cold water tank above the appliance being used.

The **water pressure and flow available** from the cold water rising main supply will affect the **rate at which the cold water tank refills**.

It will have no effect on the water pressure and flow available from any water using appliance (other than for any cold water taps connected directly to the rising main).

Water pressure is greatest on the ground floor and reduced on the upper floors.

For a shower on the top floor, the water pressure (static head) may be as little as 0.08 bar!

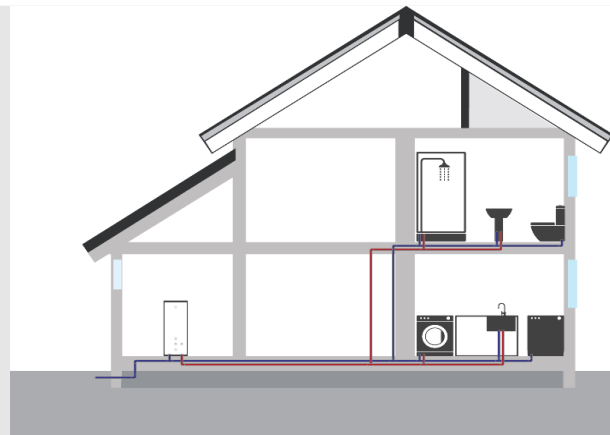
It is therefore no surprise that this type of system is often referred to as a **"low pressure system"**.

For a **Gravity (Vented) 'Low Pressure System'** a pump can be installed to increase pressure and flow to an individual shower, the entire bathroom or even the whole house.

If you have poor water pressure or flow from a Gravity (Vented) system, you should consider one of the following pump units:

[monsoon](#)
[showermate](#)
[showermate eco](#)

Mains Pressure System Also called an 'Unvented System'



Typical Features:

- A combination boiler (in smaller properties)
- A pressurised hot water cylinder (in larger properties).

The **water pressure** available is largely dependant upon **the mains water pressure in the supply pipe** to the property.

The water pressure will be the best on the ground floor, but the pressure will be reduced on upper floors of the property.

On **the third or fourth floor** of a multi-storey town house the **water pressure may be non existent!**

This type of system is often referred to as a **'High Pressure System'** - even though the pressure available in many cases may be anything but!

For a **Mains (Unvented) High Pressure System'** a pump can be installed directly in line with the rising cold water mains supply, boosting water pressure and flow to the entire property, including the combination boiler or pressurised hot water cylinder system.

To solve problems with poor water pressure and/or poor water flow in a mains (Unvented) system, you should consider one of the following pump units:

[flomate](#)
[flomate mains boost extra](#)
[flomate iBoost](#)